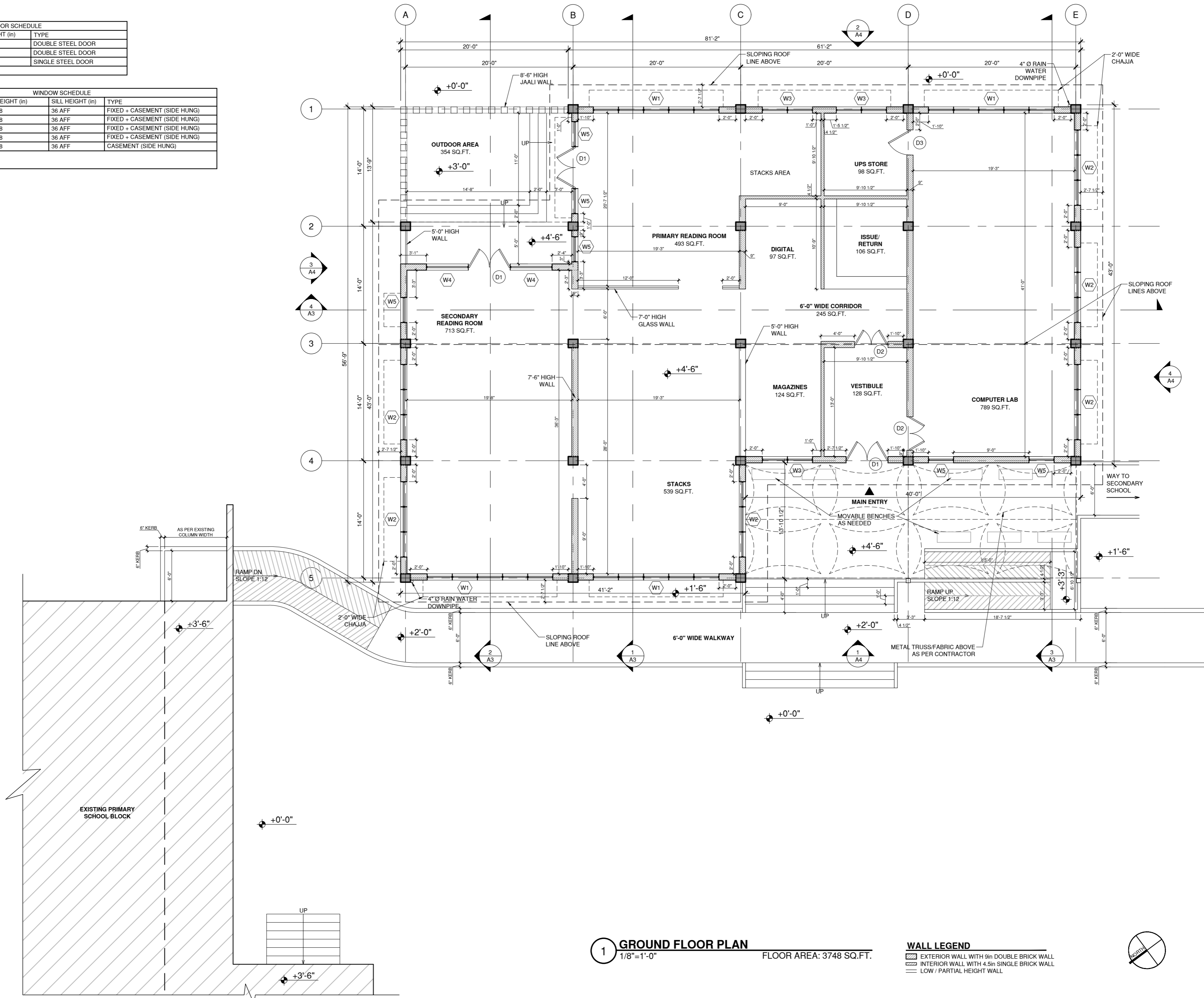


DOOR SCHEDULE			
CALL	WIDTH (in)	HEIGHT (in)	TYPE
D1	60	84	DOUBLE STEEL DOOR
D2	48	84	DOUBLE STEEL DOOR
D3	36	84	SINGLE STEEL DOOR

WINDOW SCHEDULE				
CALL	WIDTH (in)	HEIGHT (in)	SILL HEIGHT (in)	TYPE
W1	180	48	36 AFF	FIXED + CASEMENT (SIDE HUNG)
W2	108	48	36 AFF	FIXED + CASEMENT (SIDE HUNG)
W3	72	48	36 AFF	FIXED + CASEMENT (SIDE HUNG)
W4	60	48	36 AFF	FIXED + CASEMENT (SIDE HUNG)
W5	36	48	36 AFF	CASEMENT (SIDE HUNG)

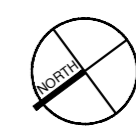
1. AFF - ABOVE FINISH FLOOR



1 GROUND FLOOR PLAN
1/8"=1'-0" FLOOR AREA: 3748 SQ.FT.

WALL LEGEND

	EXTERIOR WALL WITH 9in DOUBLE BRICK WALL
	INTERIOR WALL WITH 4.5in SINGLE BRICK WALL
	LOW / PARTIAL HEIGHT WALL

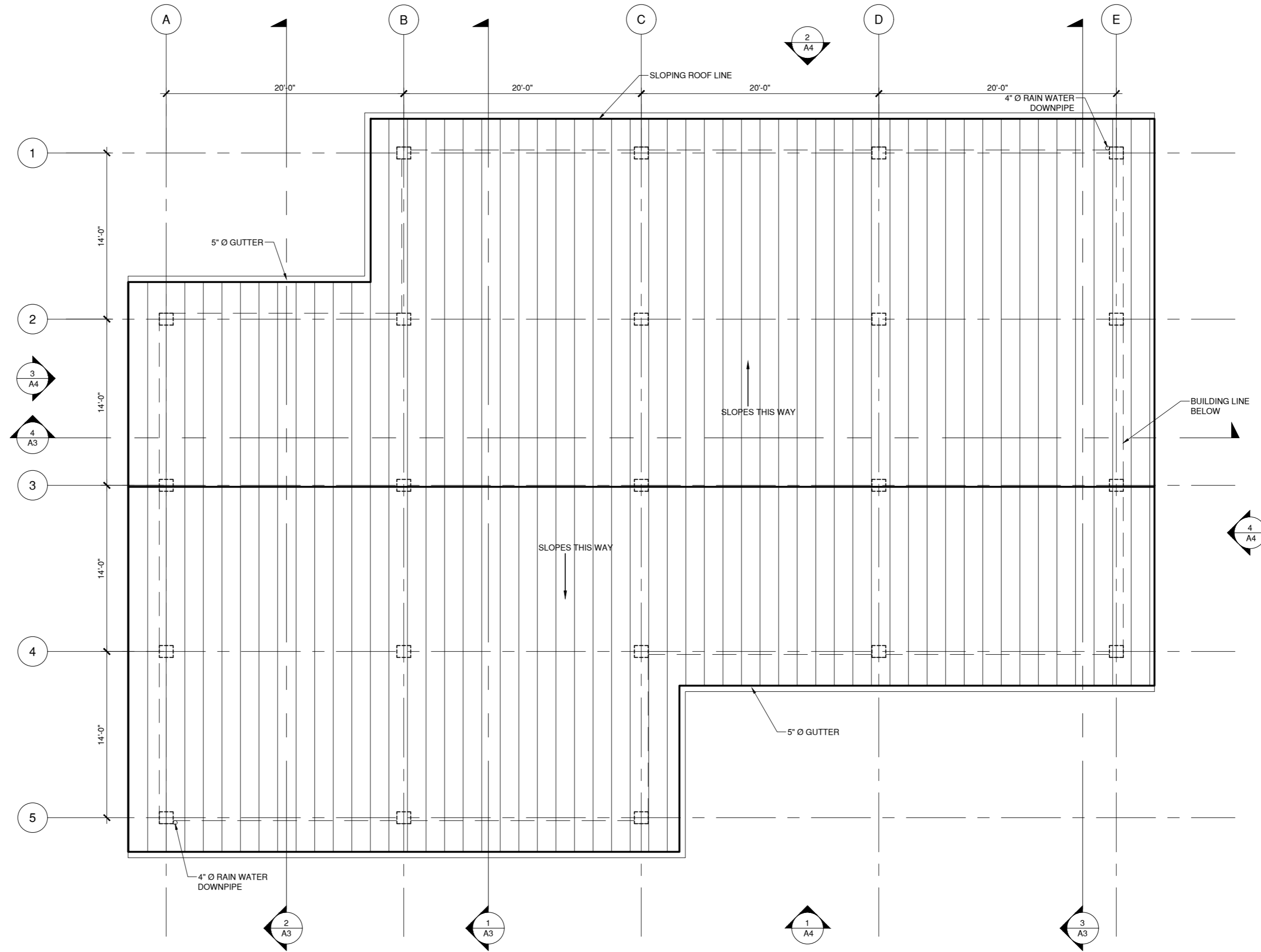


PROJECT NO. :	IN-0266
DRAWN BY :	MB
ISSUE DATE :	SEP 2016
REVISION :	DATE :
CHECKED :	DATE :
ACK :	23.09.16

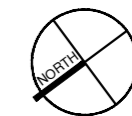
DOOR SCHEDULE			
CALL	WIDTH (in)	HEIGHT (in)	TYPE
D1	60	84	DOUBLE STEEL DOOR
D2	48	84	DOUBLE STEEL DOOR
D3	36	84	SINGLE STEEL DOOR

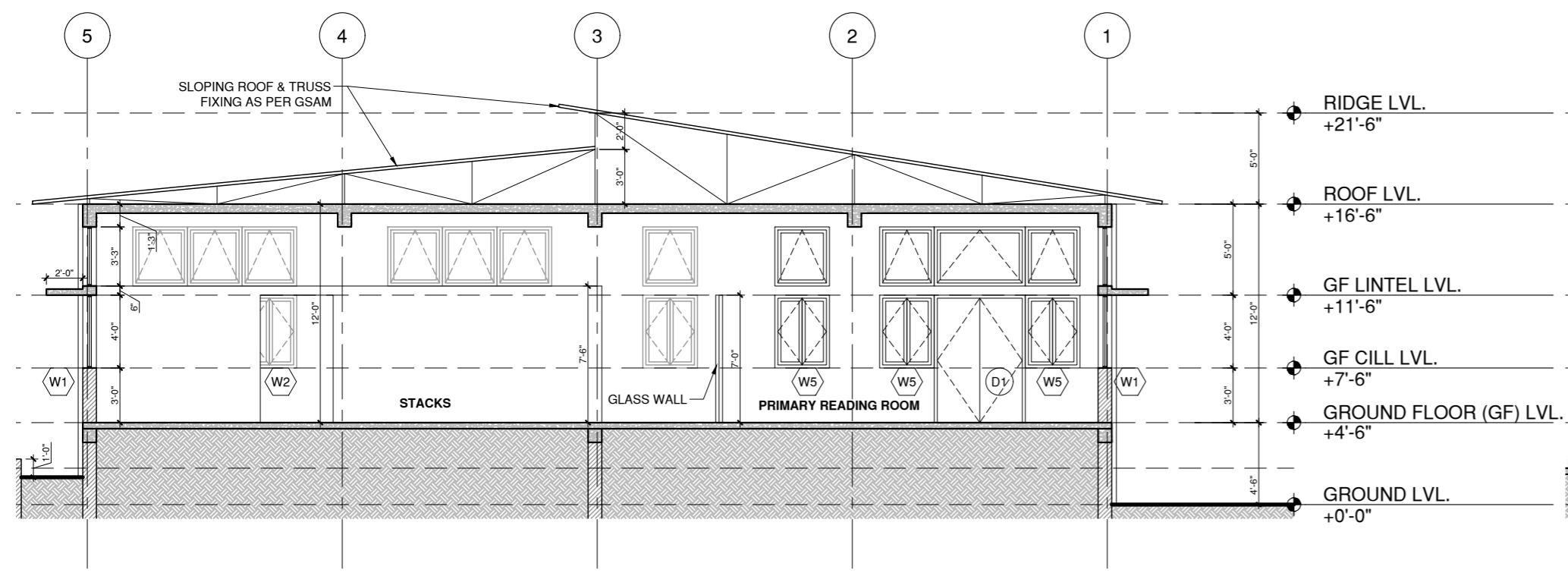
WINDOW SCHEDULE				
CALL	WIDTH (in)	HEIGHT (in)	SILL HEIGHT (in)	TYPE
W1	180	48	36 AFF	FIXED + CASEMENT (SIDE HUNG)
W2	108	48	36 AFF	FIXED + CASEMENT (SIDE HUNG)
W3	72	48	36 AFF	FIXED + CASEMENT (SIDE HUNG)
W4	60	48	36 AFF	FIXED + CASEMENT (SIDE HUNG)
W5	36	48	36 AFF	CASEMENT (SIDE HUNG)

1. AFF - ABOVE FINISH FLOOR

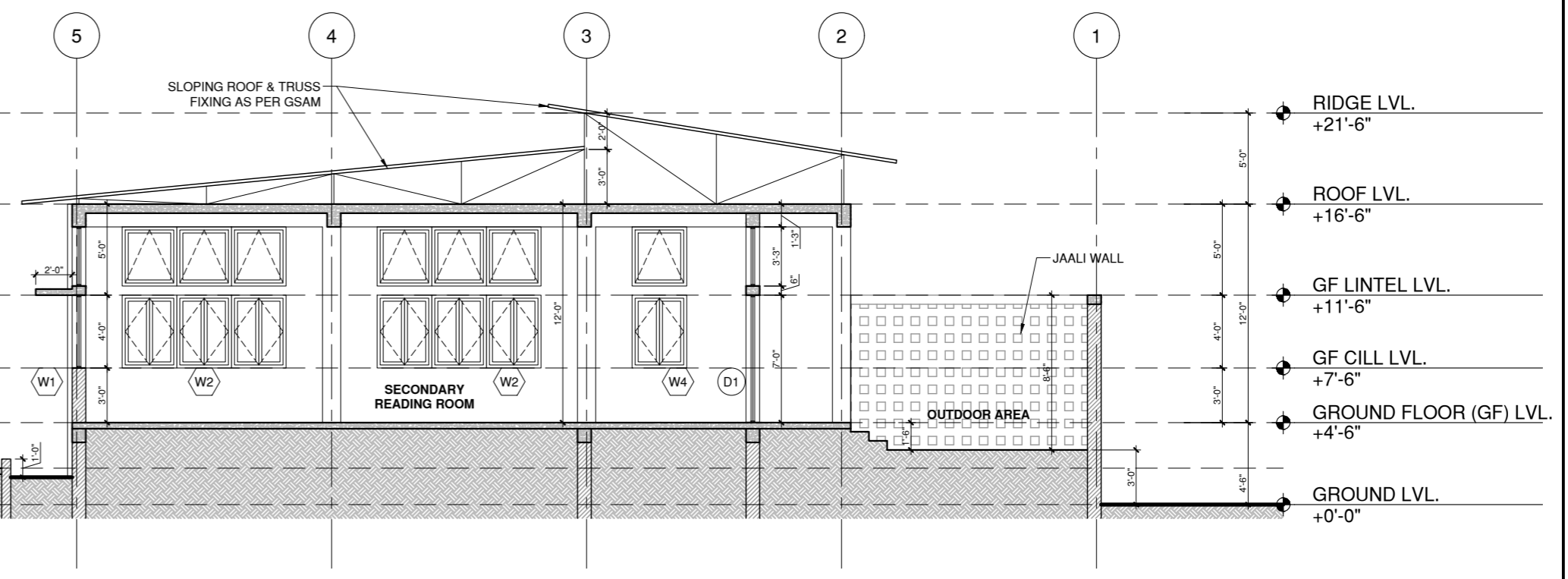


1 ROOF PLAN
1/8"=1'-0"





1 SECTION THROUGH STACKS
1/8"=1'-0"

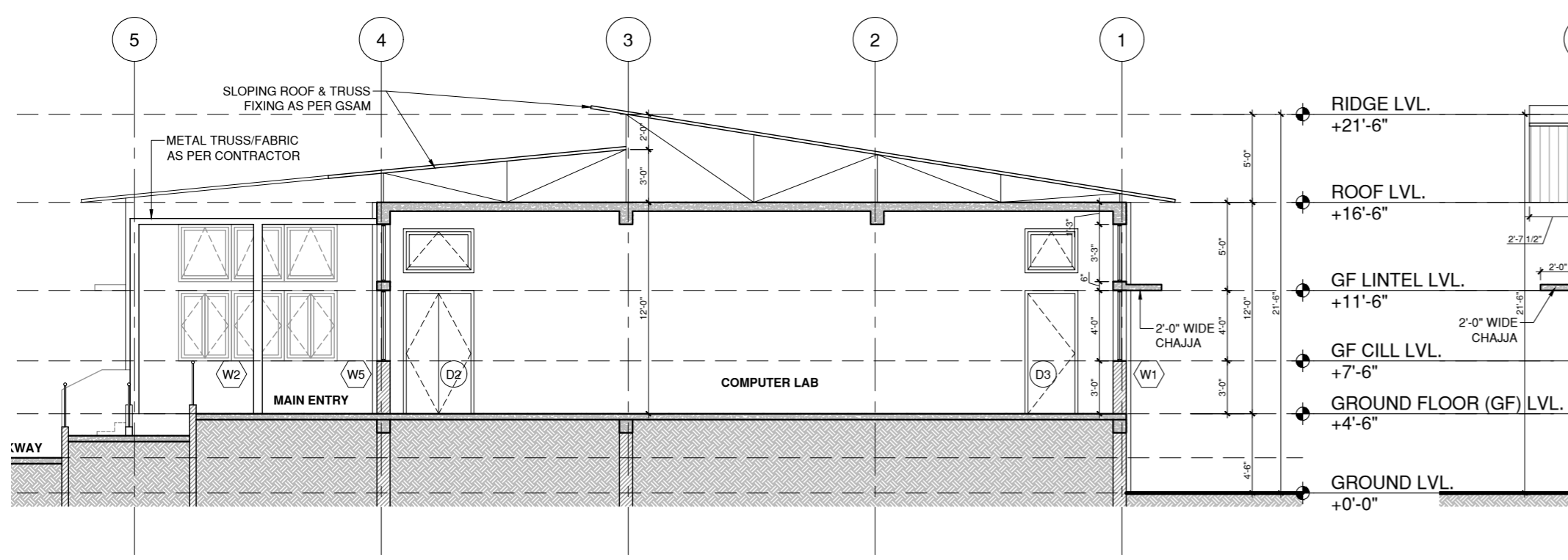


2 SECTION THROUGH OUTDOOR AREA
1/8"=1'-0"

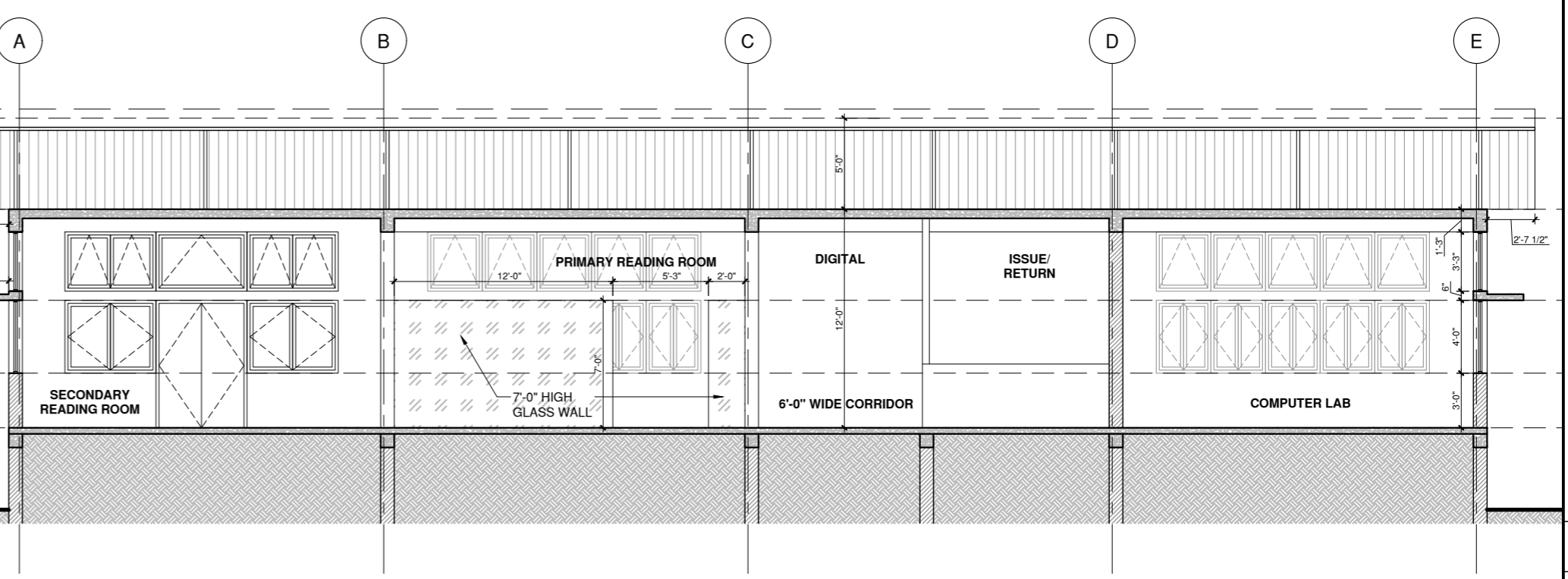
DOOR SCHEDULE			
CALL	WIDTH (in)	HEIGHT (in)	TYPE
D1	60	84	DOUBLE STEEL DOOR
D2	48	84	DOUBLE STEEL DOOR
D3	36	84	SINGLE STEEL DOOR

WINDOW SCHEDULE				
CALL	WIDTH (in)	HEIGHT (in)	SILL HEIGHT (in)	TYPE
W1	180	48	36 AFF	FIXED + CASEMENT (SIDE HUNG)
W2	108	48	36 AFF	FIXED + CASEMENT (SIDE HUNG)
W3	72	48	36 AFF	FIXED + CASEMENT (SIDE HUNG)
W4	60	48	36 AFF	FIXED + CASEMENT (SIDE HUNG)
W5	36	48	36 AFF	CASEMENT (SIDE HUNG)

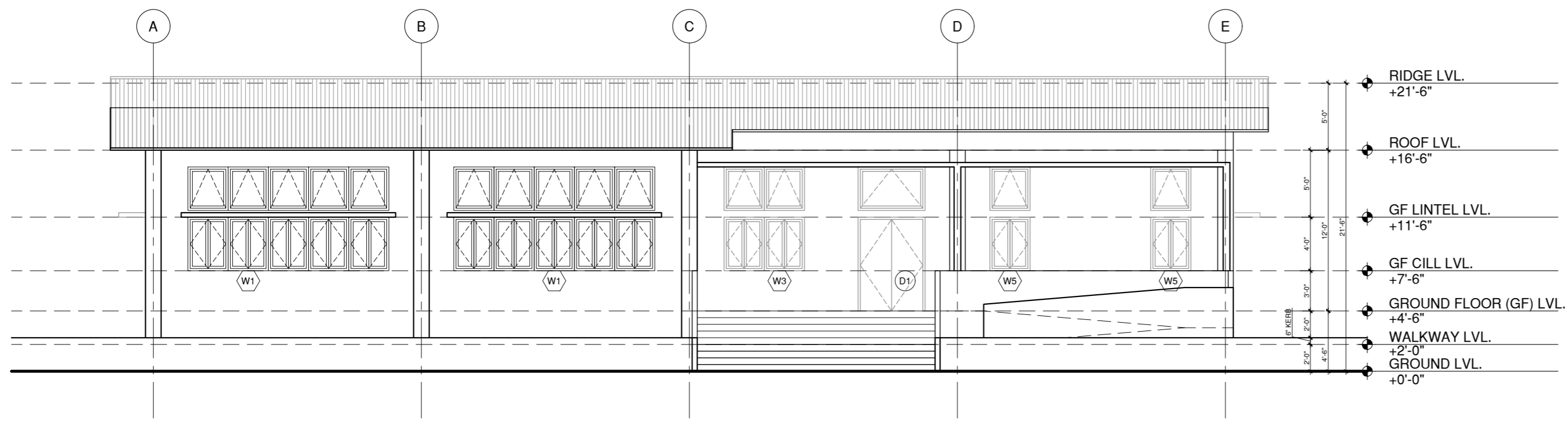
1. AFF - ABOVE FINISH FLOOR



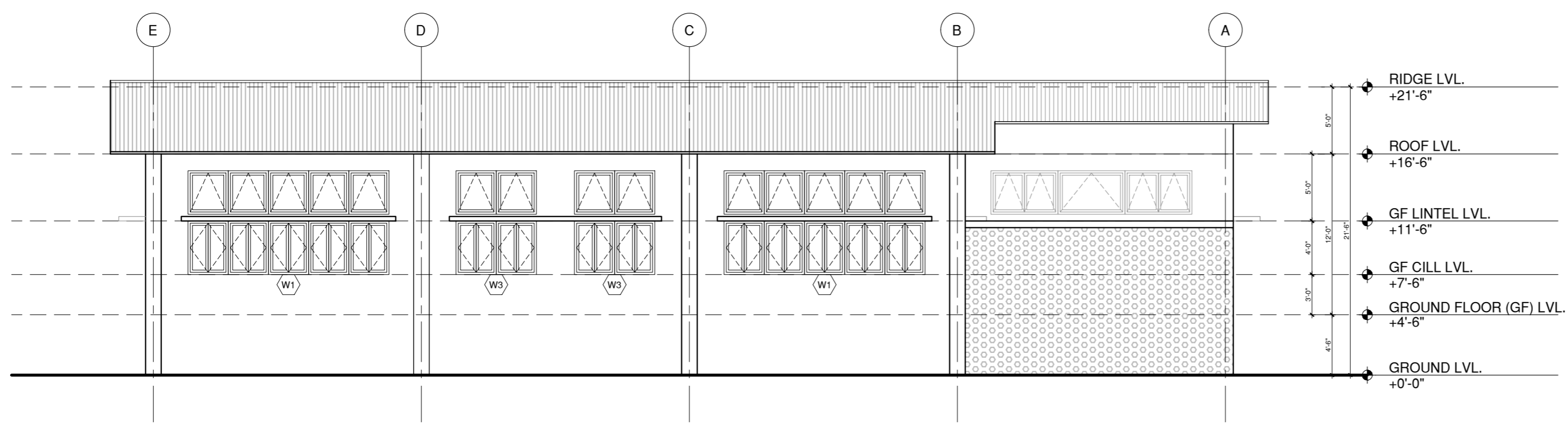
3 SECTION THROUGH COMPUTER LAB
1/8"=1'-0"



4 SECTION THROUGH CORRIDOR
1/8"=1'-0"



1 ELEVATION - NORTH WEST (FRONT)
1/8"=1'-0"

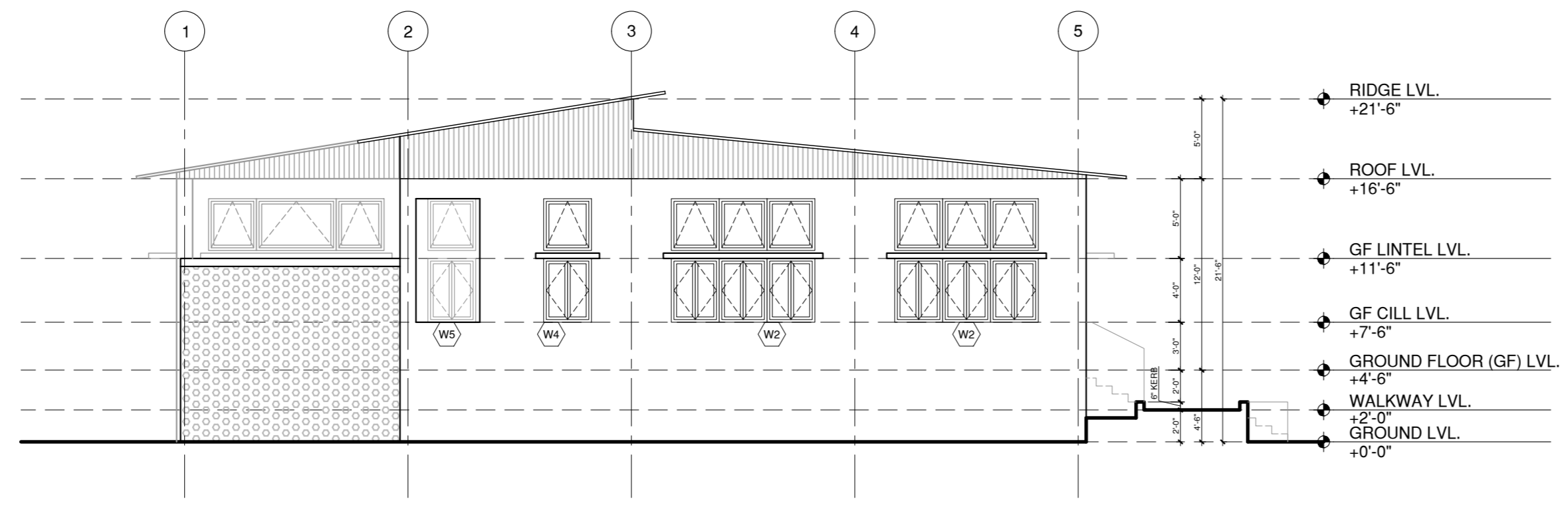


2 ELEVATION - SOUTH EAST (REAR)
1/8"=1'-0"

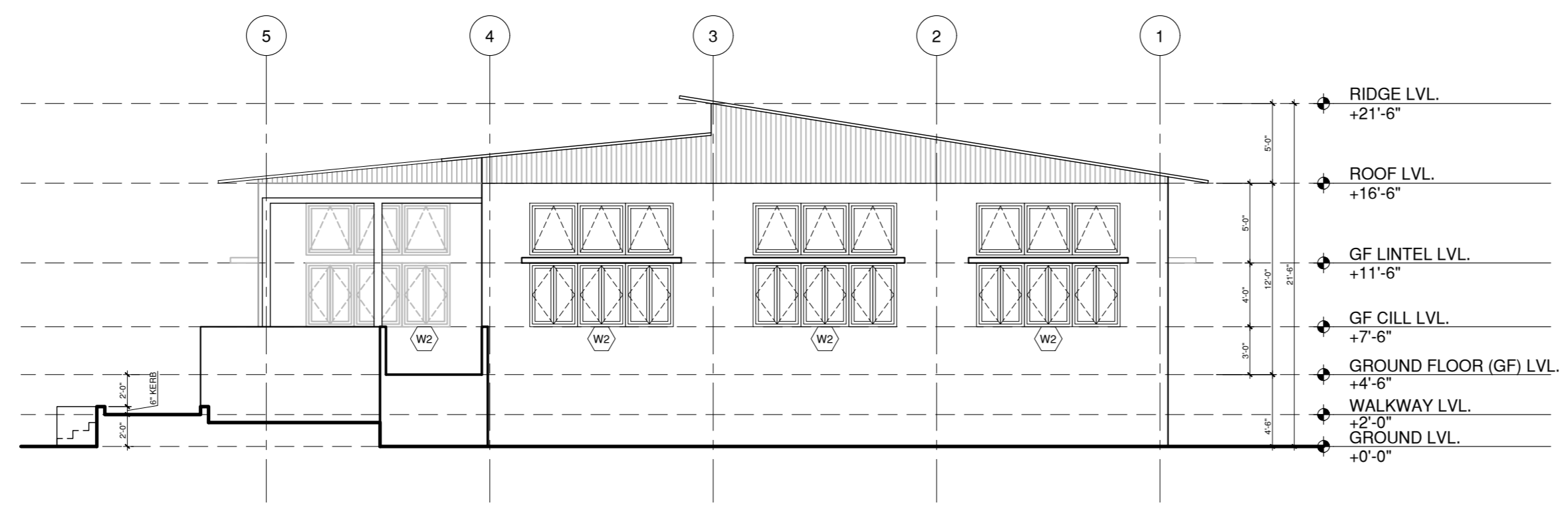
DOOR SCHEDULE			
CALL	WIDTH (m)	HEIGHT (m)	TYPE
D1	60	84	DOUBLE STEEL DOOR
D2	48	84	DOUBLE STEEL DOOR
D3	36	84	SINGLE STEEL DOOR

WINDOW SCHEDULE				
CALL	WIDTH (m)	HEIGHT (m)	SILL HEIGHT (m)	TYPE
W1	180	48	36 AFF	FIXED + CASEMENT (SIDE HUNG)
W2	108	48	36 AFF	FIXED + CASEMENT (SIDE HUNG)
W3	72	48	36 AFF	FIXED + CASEMENT (SIDE HUNG)
W4	60	48	36 AFF	FIXED + CASEMENT (SIDE HUNG)
W5	36	48	36 AFF	CASEMENT (SIDE HUNG)

1. AFF - ABOVE FINISH FLOOR



3 ELEVATION - NORTH EAST
1/8"=1'-0"

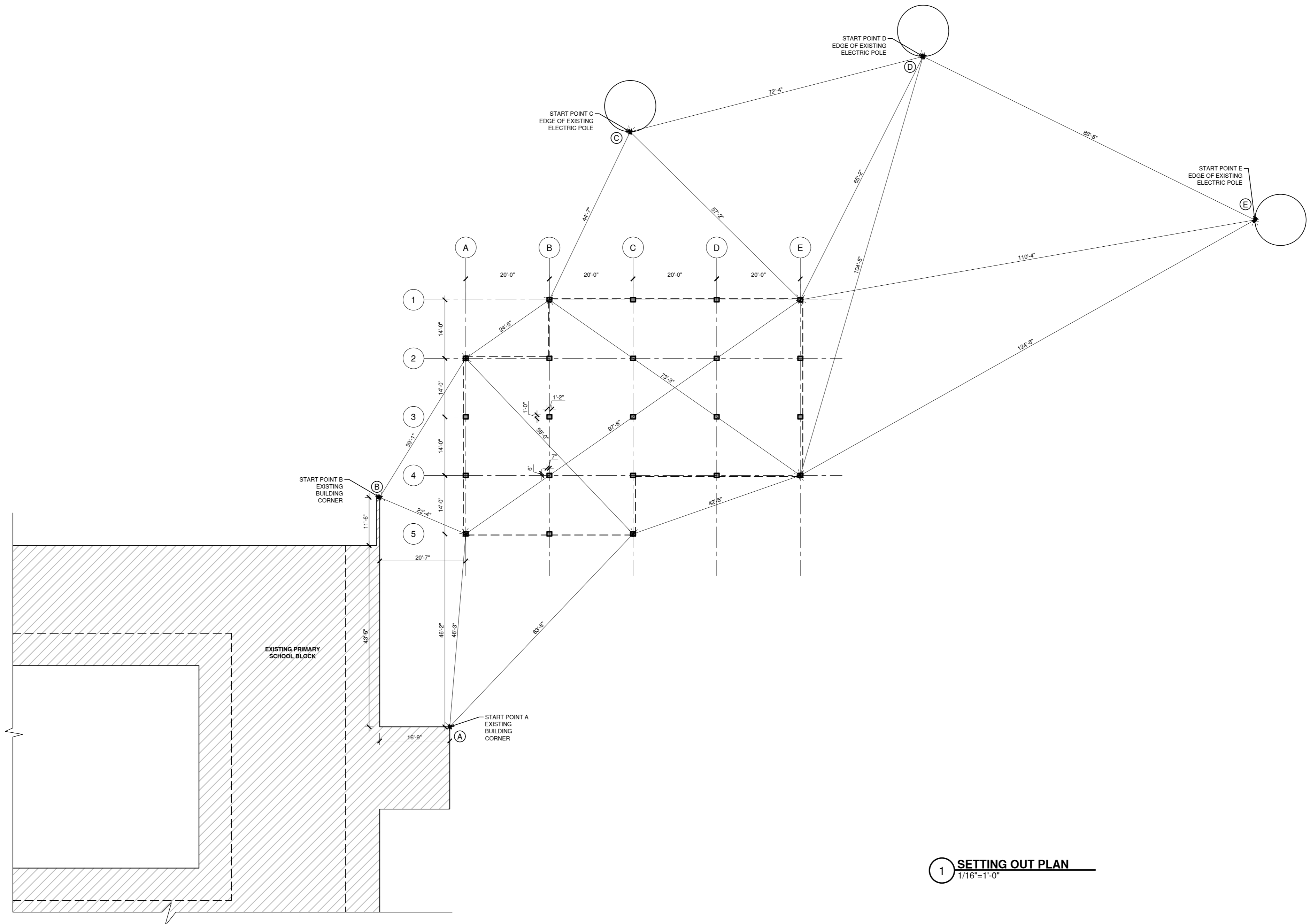


4 ELEVATION - SOUTH WEST
1/8"=1'-0"

DOOR SCHEDULE			
CALL	WIDTH (m)	HEIGHT (m)	TYPE
D1	60	84	DOUBLE STEEL DOOR
D2	48	84	DOUBLE STEEL DOOR
D3	36	84	SINGLE STEEL DOOR

WINDOW SCHEDULE				
CALL	WIDTH (m)	HEIGHT (m)	SILL HEIGHT (m)	TYPE
W1	180	48	36 AFF	FIXED + CASEMENT (SIDE HUNG)
W2	108	48	36 AFF	FIXED + CASEMENT (SIDE HUNG)
W3	72	48	36 AFF	FIXED + CASEMENT (SIDE HUNG)
W4	60	48	36 AFF	FIXED + CASEMENT (SIDE HUNG)
W5	36	48	36 AFF	CASEMENT (SIDE HUNG)

1. AFF - ABOVE FINISH FLOOR



1 SETTING OUT PLAN
1/16" = 1'-0"

GENERAL SPECIFICATIONS AND NOTES

1. GENERAL NOTES

1.1 THIS STRUCTURE IS LOCATED IN AN AREA OF EARTHQUAKE HAZARD ZONE IV (SEVERE DAMAGE RISK ZONE) AS PER VULNERABILITY ATLAS OF INDIA (1997).

1.2 REINFORCED CONCRETE STRUCTURAL DESIGN IS IN ACCORDANCE WITH APPLICABLE INDIAN STANDARD (IS) CODES INCLUDING IS456:2000, IS1893 AND IS13920:2008 FOR EARTHQUAKE (LATERAL) DESIGN CRITERIA & DETAILING OF MEMBERS.

1.3 FOUNDATIONS ARE DESIGNED FOR AN ALLOWABLE BEARING PRESSURE (SBC) OF 96 kN/m² OR 2,000 POUNDS PER SQUARE FOOT (PSF).

1.4 CAREFULLY LAY OUT COLUMN AND WALL FOUNDATION LOCATIONS ACCORDING TO THE DIMENSIONS SHOWN ON THE FOUNDATION PLAN STARTING WITH THE LAYOUT DIMENSIONS SHOWN.

1.5 PLACE FOOTINGS ON 3" SAND LEVELING BASE PLACED ABOVE DRY, NATURAL SOILS AND REMOVE ANY LOOSE SOIL OR GARBAGE FROM EXCAVATION.

1.6 REMOVE ALL TOPSOIL AND ORGANIC MATERIAL PRIOR TO PLACING FLOOR BASE SOIL. FLOOR BASE SOIL LAYER SHALL BE A MINIMUM OF 6" THICK AND SHALL BE A SAND AND GRAVEL MATERIAL. COMPACT FLOOR BASE TO PROVIDE STABLE BASE FOR GROUND FLOOR SLAB.

1.7 PROPERLY CURE CONCRETE WORK BY MAINTAINING IT IN A WET OR DAMP CONDITION PER LOCAL METHODS AND PRACTICES.

1.8 CONSTRUCTION DOCUMENTS ARE THE PROPERTY OF eMi³, AND ARE INTENDED FOR USE ON THIS SITE ONLY.

1.9 ANY CONFLICT OR DISCREPANCY BETWEEN DRAWINGS OR EXISTING CONDITIONS SHOULD BE BROUGHT TO THE ATTENTION OF eMi³ BEFORE PROCEEDING WITH WORK.

2.3 ALL REINFORCING STEEL SHALL BE SUPPORTED AND SECURED AGAINST MOVEMENT DURING PLACEMENT OF CONCRETE BY THE USE OF 'CHAIR' SPACERS OR EQUIVALENT METHODS.

2.4 SPLICING OF RODS SHALL BE AVOIDED AS MUCH AS POSSIBLE THROUGH USE OF FULL BAR LENGTHS. WHERE REQUIRED, THE FOLLOWING LAP LENGTHS FOR ROD SPLICING SHALL BE USED:

ROD SIZE	SPLICE LENGTH
10mm	12"
12mm	12"
16mm	16"
20mm	24"
22mm	30"

REFER TO COLUMN ELEVATION & BEAM ELEVATION DETAILS FOR ALL SPLICE LOCATIONS.

3. CONCRETE

3.1 CLEAR CONCRETE COVER OVER ALL REINFORCEMENT SHALL BE AS FOLLOWS:

FOOTINGS.....	2" (50mm)
COLUMNS & BEAMS.....	1 1/2" (30mm)
FLOOR SLABS.....	3/4" (20mm)

3.2 CEMENT USED SHALL BE FRESH ORDINARY PORTLAND CEMENT (43 OPC). CEMENT STORED ON SITE SHALL BE KEPT IN A DRY CONDITION. CEMENT WHICH HAS BEEN STORED FOR OVER 6 MONTHS SHALL NOT BE USED.

3.2 SAND SHALL BE DRY AND FREE OF IMPURITIES SUCH AS CLAY, SILTS, SALTS, MICA, AND ORGANIC MATTER.

3.3 MAXIMUM AGGREGATE (GRAVEL) SIZE TO BE USED IN CONCRETE MIX SHALL BE 20mm (3/4").

3.4 CONCRETE SPECIFICATION:

- GRADE M20
- MINIMUM 20 N/mm² (2900 PSI) COMPRESSIVE STRENGTH AFTER 28-DAYS
- PROPORTIONS PER 50 KG BAG OF CEMENT (1:1.5:3):
53 LITRES DRY SAND (88KG)
105 LITRES DRY GRAVEL (185KG)
MAXIMUM 30.0 LITRES, CLEAN WATER

NOTE: WATER SHALL BE ADDED UP TO THE MAXIMUM AMOUNT ALLOWED TO MAKE A WORKABLE MIX THAT CAN BE PROPERLY PLACED AND CONSOLIDATED.

3.5 ALL CONCRETE SHALL BE MIXED BY A MECHANICAL MIXER AND QUICKLY PLACED IN POSITION. AFTER PLACING, CONCRETE SHALL BE WELL CONSOLIDATED BY RODDING, TAMPING, OR BY VIBRATING (PREFERABLE).

2. STEEL

2.1 ALL REINFORCING STEEL RODS SHALL BE MILD STEEL DEFORMED RIBBED BARS WITH A YIELD STRENGTH OF 250 N/mm² (40,000 PSI). USE TORSTEEL RODS OR EQUIVALENT.

2.2 ALL BEAM AND COLUMN HOOP REINFORCEMENT SHALL BE CLOSED HOOPS. ALL HOOPS, HOOKS, AND BENDS ARE AS PER DETAIL D/S1.

2.3 ALL BEAM AND COLUMN HOOP REINFORCEMENT SHALL BE CLOSED HOOPS. ALL HOOPS, HOOKS, AND BENDS ARE AS PER DETAIL D/S1.

2.4 ALL BEAM AND COLUMN HOOP REINFORCEMENT SHALL BE CLOSED HOOPS. ALL HOOPS, HOOKS, AND BENDS ARE AS PER DETAIL D/S1.

2.5 ALL BEAM AND COLUMN HOOP REINFORCEMENT SHALL BE CLOSED HOOPS. ALL HOOPS, HOOKS, AND BENDS ARE AS PER DETAIL D/S1.

2.6 ALL BEAM AND COLUMN HOOP REINFORCEMENT SHALL BE CLOSED HOOPS. ALL HOOPS, HOOKS, AND BENDS ARE AS PER DETAIL D/S1.

2.7 ALL BEAM AND COLUMN HOOP REINFORCEMENT SHALL BE CLOSED HOOPS. ALL HOOPS, HOOKS, AND BENDS ARE AS PER DETAIL D/S1.

2.8 ALL BEAM AND COLUMN HOOP REINFORCEMENT SHALL BE CLOSED HOOPS. ALL HOOPS, HOOKS, AND BENDS ARE AS PER DETAIL D/S1.

2.9 ALL BEAM AND COLUMN HOOP REINFORCEMENT SHALL BE CLOSED HOOPS. ALL HOOPS, HOOKS, AND BENDS ARE AS PER DETAIL D/S1.

2.10 ALL BEAM AND COLUMN HOOP REINFORCEMENT SHALL BE CLOSED HOOPS. ALL HOOPS, HOOKS, AND BENDS ARE AS PER DETAIL D/S1.

2.11 ALL BEAM AND COLUMN HOOP REINFORCEMENT SHALL BE CLOSED HOOPS. ALL HOOPS, HOOKS, AND BENDS ARE AS PER DETAIL D/S1.

2.12 ALL BEAM AND COLUMN HOOP REINFORCEMENT SHALL BE CLOSED HOOPS. ALL HOOPS, HOOKS, AND BENDS ARE AS PER DETAIL D/S1.

2.13 ALL BEAM AND COLUMN HOOP REINFORCEMENT SHALL BE CLOSED HOOPS. ALL HOOPS, HOOKS, AND BENDS ARE AS PER DETAIL D/S1.

2.14 ALL BEAM AND COLUMN HOOP REINFORCEMENT SHALL BE CLOSED HOOPS. ALL HOOPS, HOOKS, AND BENDS ARE AS PER DETAIL D/S1.

2.15 ALL BEAM AND COLUMN HOOP REINFORCEMENT SHALL BE CLOSED HOOPS. ALL HOOPS, HOOKS, AND BENDS ARE AS PER DETAIL D/S1.

2.16 ALL BEAM AND COLUMN HOOP REINFORCEMENT SHALL BE CLOSED HOOPS. ALL HOOPS, HOOKS, AND BENDS ARE AS PER DETAIL D/S1.

2.17 ALL BEAM AND COLUMN HOOP REINFORCEMENT SHALL BE CLOSED HOOPS. ALL HOOPS, HOOKS, AND BENDS ARE AS PER DETAIL D/S1.

2.18 ALL BEAM AND COLUMN HOOP REINFORCEMENT SHALL BE CLOSED HOOPS. ALL HOOPS, HOOKS, AND BENDS ARE AS PER DETAIL D/S1.

2.19 ALL BEAM AND COLUMN HOOP REINFORCEMENT SHALL BE CLOSED HOOPS. ALL HOOPS, HOOKS, AND BENDS ARE AS PER DETAIL D/S1.

2.20 ALL BEAM AND COLUMN HOOP REINFORCEMENT SHALL BE CLOSED HOOPS. ALL HOOPS, HOOKS, AND BENDS ARE AS PER DETAIL D/S1.

2.21 ALL BEAM AND COLUMN HOOP REINFORCEMENT SHALL BE CLOSED HOOPS. ALL HOOPS, HOOKS, AND BENDS ARE AS PER DETAIL D/S1.

2.22 ALL BEAM AND COLUMN HOOP REINFORCEMENT SHALL BE CLOSED HOOPS. ALL HOOPS, HOOKS, AND BENDS ARE AS PER DETAIL D/S1.

2.23 ALL BEAM AND COLUMN HOOP REINFORCEMENT SHALL BE CLOSED HOOPS. ALL HOOPS, HOOKS, AND BENDS ARE AS PER DETAIL D/S1.

2.24 ALL BEAM AND COLUMN HOOP REINFORCEMENT SHALL BE CLOSED HOOPS. ALL HOOPS, HOOKS, AND BENDS ARE AS PER DETAIL D/S1.

2.25 ALL BEAM AND COLUMN HOOP REINFORCEMENT SHALL BE CLOSED HOOPS. ALL HOOPS, HOOKS, AND BENDS ARE AS PER DETAIL D/S1.

2.26 ALL BEAM AND COLUMN HOOP REINFORCEMENT SHALL BE CLOSED HOOPS. ALL HOOPS, HOOKS, AND BENDS ARE AS PER DETAIL D/S1.

2.27 ALL BEAM AND COLUMN HOOP REINFORCEMENT SHALL BE CLOSED HOOPS. ALL HOOPS, HOOKS, AND BENDS ARE AS PER DETAIL D/S1.

2.28 ALL BEAM AND COLUMN HOOP REINFORCEMENT SHALL BE CLOSED HOOPS. ALL HOOPS, HOOKS, AND BENDS ARE AS PER DETAIL D/S1.

2.29 ALL BEAM AND COLUMN HOOP REINFORCEMENT SHALL BE CLOSED HOOPS. ALL HOOPS, HOOKS, AND BENDS ARE AS PER DETAIL D/S1.

2.30 ALL BEAM AND COLUMN HOOP REINFORCEMENT SHALL BE CLOSED HOOPS. ALL HOOPS, HOOKS, AND BENDS ARE AS PER DETAIL D/S1.

2.31 ALL BEAM AND COLUMN HOOP REINFORCEMENT SHALL BE CLOSED HOOPS. ALL HOOPS, HOOKS, AND BENDS ARE AS PER DETAIL D/S1.

2.32 ALL BEAM AND COLUMN HOOP REINFORCEMENT SHALL BE CLOSED HOOPS. ALL HOOPS, HOOKS, AND BENDS ARE AS PER DETAIL D/S1.

2.33 ALL BEAM AND COLUMN HOOP REINFORCEMENT SHALL BE CLOSED HOOPS. ALL HOOPS, HOOKS, AND BENDS ARE AS PER DETAIL D/S1.

2.34 ALL BEAM AND COLUMN HOOP REINFORCEMENT SHALL BE CLOSED HOOPS. ALL HOOPS, HOOKS, AND BENDS ARE AS PER DETAIL D/S1.

2.35 ALL BEAM AND COLUMN HOOP REINFORCEMENT SHALL BE CLOSED HOOPS. ALL HOOPS, HOOKS, AND BENDS ARE AS PER DETAIL D/S1.

2.36 ALL BEAM AND COLUMN HOOP REINFORCEMENT SHALL BE CLOSED HOOPS. ALL HOOPS, HOOKS, AND BENDS ARE AS PER DETAIL D/S1.

2.37 ALL BEAM AND COLUMN HOOP REINFORCEMENT SHALL BE CLOSED HOOPS. ALL HOOPS, HOOKS, AND BENDS ARE AS PER DETAIL D/S1.

2.38 ALL BEAM AND COLUMN HOOP REINFORCEMENT SHALL BE CLOSED HOOPS. ALL HOOPS, HOOKS, AND BENDS ARE AS PER DETAIL D/S1.

2.39 ALL BEAM AND COLUMN HOOP REINFORCEMENT SHALL BE CLOSED HOOPS. ALL HOOPS, HOOKS, AND BENDS ARE AS PER DETAIL D/S1.

2.40 ALL BEAM AND COLUMN HOOP REINFORCEMENT SHALL BE CLOSED HOOPS. ALL HOOPS, HOOKS, AND BENDS ARE AS PER DETAIL D/S1.

2.41 ALL BEAM AND COLUMN HOOP REINFORCEMENT SHALL BE CLOSED HOOPS. ALL HOOPS, HOOKS, AND BENDS ARE AS PER DETAIL D/S1.

2.42 ALL BEAM AND COLUMN HOOP REINFORCEMENT SHALL BE CLOSED HOOPS. ALL HOOPS, HOOKS, AND BENDS ARE AS PER DETAIL D/S1.

2.43 ALL BEAM AND COLUMN HOOP REINFORCEMENT SHALL BE CLOSED HOOPS. ALL HOOPS, HOOKS, AND BENDS ARE AS PER DETAIL D/S1.

2.44 ALL BEAM AND COLUMN HOOP REINFORCEMENT SHALL BE CLOSED HOOPS. ALL HOOPS, HOOKS, AND BENDS ARE AS PER DETAIL D/S1.

2.45 ALL BEAM AND COLUMN HOOP REINFORCEMENT SHALL BE CLOSED HOOPS. ALL HOOPS, HOOKS, AND BENDS ARE AS PER DETAIL D/S1.

2.46 ALL BEAM AND COLUMN HOOP REINFORCEMENT SHALL BE CLOSED HOOPS. ALL HOOPS, HOOKS, AND BENDS ARE AS PER DETAIL D/S1.

2.47 ALL BEAM AND COLUMN HOOP REINFORCEMENT SHALL BE CLOSED HOOPS. ALL HOOPS, HOOKS, AND BENDS ARE AS PER DETAIL D/S1.

2.48 ALL BEAM AND COLUMN HOOP REINFORCEMENT SHALL BE CLOSED HOOPS. ALL HOOPS, HOOKS, AND BENDS ARE AS PER DETAIL D/S1.

2.49 ALL BEAM AND COLUMN HOOP REINFORCEMENT SHALL BE CLOSED HOOPS. ALL HOOPS, HOOKS, AND BENDS ARE AS PER DETAIL D/S1.

2.50 ALL BEAM AND COLUMN HOOP REINFORCEMENT SHALL BE CLOSED HOOPS. ALL HOOPS, HOOKS, AND BENDS ARE AS PER DETAIL D/S1.

2.51 ALL BEAM AND COLUMN HOOP REINFORCEMENT SHALL BE CLOSED HOOPS. ALL HOOPS, HOOKS, AND BENDS ARE AS PER DETAIL D/S1.

2.52 ALL BEAM AND COLUMN HOOP REINFORCEMENT SHALL BE CLOSED HOOPS. ALL HOOPS, HOOKS, AND BENDS ARE AS PER DETAIL D/S1.

2.53 ALL BEAM AND COLUMN HOOP REINFORCEMENT SHALL BE CLOSED HOOPS. ALL HOOPS, HOOKS, AND BENDS ARE AS PER DETAIL D/S1.

2.54 ALL BEAM AND COLUMN HOOP REINFORCEMENT SHALL BE CLOSED HOOPS. ALL HOOPS, HOOKS, AND BENDS ARE AS PER DETAIL D/S1.

2.55 ALL BEAM AND COLUMN HOOP REINFORCEMENT SHALL BE CLOSED HOOPS. ALL HOOPS, HOOKS, AND BENDS ARE AS PER DETAIL D/S1.

2.56 ALL BEAM AND COLUMN HOOP REINFORCEMENT SHALL BE CLOSED HOOPS. ALL HOOPS, HOOKS, AND BENDS ARE AS PER DETAIL D/S1.

2.57 ALL BEAM AND COLUMN HOOP REINFORCEMENT SHALL BE CLOSED HOOPS. ALL HOOPS, HOOKS, AND BENDS ARE AS PER DETAIL D/S1.

2.58 ALL BEAM AND COLUMN HOOP REINFORCEMENT SHALL BE CLOSED HOOPS. ALL HOOPS, HOOKS, AND BENDS ARE AS PER DETAIL D/S1.

2.59 ALL BEAM AND COLUMN HOOP REINFORCEMENT SHALL BE CLOSED HOOPS. ALL HOOPS, HOOKS, AND BENDS ARE AS PER DETAIL D/S1.

2.60 ALL BEAM AND COLUMN HOOP REINFORCEMENT SHALL BE CLOSED HOOPS. ALL HOOPS, HOOKS, AND BENDS ARE AS PER DETAIL D/S1.

2.61 ALL BEAM AND COLUMN HOOP REINFORCEMENT SHALL BE CLOSED HOOPS. ALL HOOPS, HOOKS, AND BENDS ARE AS PER DETAIL D/S1.

2.62 ALL BEAM AND COLUMN HOOP REINFORCEMENT SHALL BE CLOSED HOOPS. ALL HOOPS, HOOKS, AND BENDS ARE AS PER DETAIL D/S1.

2.63 ALL BEAM AND COLUMN HOOP REINFORCEMENT SHALL BE CLOSED HOOPS. ALL HOOPS, HOOKS, AND BENDS ARE AS PER DETAIL D/S1.

2.64 ALL BEAM AND COLUMN HOOP REINFORCEMENT SHALL BE CLOSED HOOPS. ALL HOOPS, HOOKS, AND BENDS ARE AS PER DETAIL D/S1.

2.65 ALL BEAM AND COLUMN HOOP REINFORCEMENT SHALL BE CLOSED HOOPS. ALL HOOPS, HOOKS, AND BENDS ARE AS PER DETAIL D/S1.

2.66 ALL BEAM AND COLUMN HOOP REINFORCEMENT SHALL BE CLOSED HOOPS. ALL HOOPS, HOOKS, AND BENDS ARE AS PER DETAIL D/S1.

2.67 ALL BEAM AND COLUMN HOOP REINFORCEMENT SHALL BE CLOSED HOOPS. ALL HOOPS, HOOKS, AND BENDS ARE AS PER DETAIL D/S1.

2.68 ALL BEAM AND COLUMN HOOP REINFORCEMENT SHALL BE CLOSED HOOPS. ALL HOOPS, HOOKS, AND BENDS ARE AS PER DETAIL D/S1.

2.69 ALL BEAM AND COLUMN HOOP REINFORCEMENT SHALL BE CLOSED HOOPS. ALL HOOPS, HOOKS, AND BENDS ARE AS PER DETAIL D/S1.

2.70 ALL BEAM AND COLUMN HOOP REINFORCEMENT SHALL BE CLOSED HOOPS. ALL HOOPS, HOOKS, AND BENDS ARE AS PER DETAIL D/S1.

2.71 ALL BEAM AND COLUMN HOOP REINFORCEMENT SHALL BE CLOSED HOOPS. ALL HOOPS, HOOKS, AND BENDS ARE AS PER DETAIL D/S1.

2.72 ALL BEAM AND COLUMN HOOP REINFORCEMENT SHALL BE CLOSED HOOPS. ALL HOOPS, HOOKS, AND BENDS ARE AS PER DETAIL D/S1.

2.73 ALL BEAM AND COLUMN HOOP REINFORCEMENT SHALL BE CLOSED HOOPS. ALL HOOPS, HOOKS, AND BENDS ARE AS PER DETAIL D/S1.

2.74 ALL BEAM AND COLUMN HOOP REINFORCEMENT SHALL BE CLOSED HOOPS. ALL HOOPS, HOOKS, AND BENDS ARE AS PER DETAIL D/S1.

2.75 ALL BEAM AND COLUMN HOOP REINFORCEMENT SHALL BE CLOSED HOOPS. ALL HOOPS, HOOKS, AND BENDS ARE AS PER DETAIL D/S1.

2.76 ALL BEAM AND COLUMN HOOP REINFORCEMENT SHALL BE CLOSED HOOPS. ALL HOOPS, HOOKS, AND BENDS ARE AS PER DETAIL D/S1.

2.77 ALL BEAM AND COLUMN HOOP REINFORCEMENT SHALL BE CLOSED HOOPS. ALL HOOPS, HOOKS, AND BENDS ARE AS PER DETAIL D/S1.

2.78 ALL BEAM AND COLUMN HOOP REINFORCEMENT SHALL BE CLOSED HOOPS. ALL HOOPS, HOOKS, AND BENDS ARE AS PER DETAIL D/S1.

2.79 ALL BEAM AND COLUMN HOOP REINFORCEMENT SHALL BE CLOSED HOOPS. ALL HOOPS, HOOKS, AND BENDS ARE AS PER DETAIL D/S1.

2.80 ALL BEAM AND COLUMN HOOP REINFORCEMENT SHALL BE CLOSED HOOPS. ALL HOOPS, HOOKS, AND BENDS ARE AS PER DETAIL D/S1.

2.81 ALL BEAM AND COLUMN HOOP REINFORCEMENT SHALL BE CLOSED HOOPS. ALL HOOPS, HOOKS, AND BENDS ARE AS PER DETAIL D/S1.

2.82 ALL BEAM AND COLUMN HOOP REINFORCEMENT SHALL BE CLOSED HOOPS. ALL HOOPS, HOOKS, AND BENDS ARE AS PER DETAIL D/S1.

2.83 ALL BEAM AND COLUMN HOOP REINFORCEMENT SHALL BE CLOSED HOOPS. ALL HOOPS, HOOKS, AND BENDS ARE AS PER DETAIL D/S1.

2.84 ALL BEAM AND COLUMN HOOP REINFORCEMENT SHALL BE CLOSED HOOPS. ALL HOOPS, HOOKS, AND BENDS ARE AS PER DETAIL D/S1.

2.85 ALL BEAM AND COLUMN HOOP REINFORCEMENT SHALL BE CLOSED HOOPS. ALL HOOPS, HOOKS, AND BENDS ARE AS PER DETAIL D/S1.

2.86 ALL BEAM AND COLUMN HOOP REINFORCEMENT SHALL BE CLOSED HOOPS. ALL HOOPS, HOOKS, AND BENDS ARE AS PER DETAIL D/S1.

2.87 ALL BEAM AND COLUMN HOOP REINFORCEMENT SHALL BE CLOSED HOOPS. ALL HOOPS, HOOKS, AND BENDS ARE AS PER DETAIL D/S1.

2.88 ALL BEAM AND COLUMN HOOP REINFORCEMENT SHALL BE CLOSED HOOPS. ALL HOOPS, HOOKS, AND BENDS ARE AS PER DETAIL D/S1.

2.89 ALL BEAM AND COLUMN HOOP REINFORCEMENT SHALL BE CLOSED HOOPS. ALL HOOPS, HOOKS, AND BENDS ARE AS PER DETAIL D/S1.

2.90 ALL BEAM AND COLUMN HOOP REINFORCEMENT SHALL BE CLOSED HOOPS. ALL HOOPS, HOOKS, AND BENDS ARE AS PER DETAIL D/S1.

2.91 ALL BEAM AND COLUMN HOOP REINFORCEMENT SHALL BE CLOSED HOOPS. ALL HOOPS, HOOKS, AND BENDS ARE AS PER DETAIL D/S1.

2.92 ALL BEAM AND COLUMN HOOP REINFORCEMENT SHALL BE CLOSED HOOPS. ALL HOOPS, HOOKS, AND BENDS ARE AS PER DETAIL D/S1.

2.93 ALL BEAM AND COLUMN HOOP REINFORCEMENT SHALL BE CLOSED HOOPS. ALL HOOPS, HOOKS, AND BENDS ARE AS PER DETAIL D/S1.

2.94 ALL BEAM AND COLUMN HOOP REINFORCEMENT SHALL BE CLOSED HOOPS. ALL HOOPS, HOOKS, AND BENDS ARE AS PER DETAIL D/S1.

2.95 ALL BEAM AND COLUMN HOOP REINFORCEMENT SHALL BE CLOSED HOOPS. ALL HOOPS, HOOKS, AND BENDS ARE AS PER DETAIL D/S1.

2.96 ALL BEAM AND COLUMN HOOP REINFORCEMENT SHALL BE CLOSED HOOPS. ALL HOOPS, HOOKS, AND BENDS ARE AS PER DETAIL D/S1.

2.97 ALL BEAM AND COLUMN HOOP REINFORCEMENT SHALL BE CLOSED HOOPS. ALL HOOPS, HOOKS, AND BENDS ARE AS PER DETAIL D/S1.

2.98 ALL BEAM AND COLUMN HOOP REINFORCEMENT SHALL BE CLOSED HOOPS. ALL HOOPS, HOOKS, AND BENDS ARE AS PER DETAIL D/S1.

2.99 ALL BEAM AND COLUMN HOOP REINFORCEMENT SHALL BE CLOSED HOOPS. ALL HOOPS, HOOKS, AND BENDS ARE AS PER DETAIL D/S1.

2.100 ALL BEAM AND COLUMN HOOP REINFORCEMENT SHALL BE CLOSED HOOPS. ALL HOOPS, HOOKS, AND BENDS ARE AS PER DETAIL D/S1.

2.101 ALL BEAM AND COLUMN HOOP REINFORCEMENT SHALL BE CLOSED HOOPS. ALL HOOPS, HOOKS, AND BENDS ARE AS PER DETAIL D/S1.

2.102 ALL BEAM AND COLUMN HOOP REINFORCEMENT SHALL BE CLOSED HOOPS. ALL HOOPS, HOOKS, AND BENDS ARE AS PER DETAIL D/S1.

2.103 ALL BEAM AND COLUMN HOOP REINFORCEMENT SHALL BE CLOSED HOOPS. ALL HOOPS, HOOKS, AND BENDS ARE AS PER DETAIL D/S1.

2.104 ALL BEAM AND COLUMN HOOP REINFORCEMENT SHALL BE CLOSED HOOPS. ALL HOOPS, HOOKS, AND BENDS ARE AS PER DETAIL D/S1.

2.105 ALL BEAM AND COLUMN HOOP REINFORCEMENT SHALL BE CLOSED HOOPS. ALL HOOPS, HOOKS, AND BENDS ARE AS PER DETAIL D/S1.

2.106 ALL BEAM AND COLUMN HOOP REINFORCEMENT SHALL BE CLOSED HOOPS. ALL HOOPS, HOOKS, AND BENDS ARE AS PER DETAIL D/S1.

2.107 ALL BEAM AND COLUMN HOOP REINFORCEMENT SHALL BE CLOSED HOOPS. ALL HOOPS, HOOKS, AND BENDS ARE AS PER DETAIL D/S1.

2.108 ALL BEAM AND COLUMN HOOP REINFORCEMENT SHALL BE CLOSED HOOPS. ALL HOOPS, HOOKS, AND BENDS ARE AS PER DETAIL D/S1.

2.109 ALL BEAM AND COLUMN HOOP REINFORCEMENT SHALL BE CLOSED HOOPS. ALL HOOPS, HOOKS, AND BENDS ARE AS PER DETAIL D/S1.

2.110 ALL BEAM AND COLUMN HOOP REINFORCEMENT SHALL BE CLOSED HOOPS. ALL HOOPS, HOOKS, AND BENDS ARE AS PER DETAIL D/S1.

2.111 ALL BEAM AND COLUMN HOOP REINFORCEMENT SHALL BE CLOSED HOOPS. ALL HOOPS, HOOKS, AND BENDS ARE AS PER DETAIL D/S1.

2.112 ALL BEAM AND COLUMN HOOP REINFORCEMENT SHALL BE CLOSED HOOPS. ALL HOOPS, HOOKS, AND BENDS ARE AS PER DETAIL D/S1.

2.113 ALL BEAM AND COLUMN HOOP REINFORCEMENT SHALL BE CLOSED HOOPS. ALL HOOPS, HOOKS, AND BENDS ARE AS PER DETAIL D/S1.

2.114 ALL BEAM AND COLUMN HOOP REINFORCEMENT SHALL BE CLOSED HOOPS. ALL HOOPS, HOOKS, AND BENDS ARE AS PER DETAIL D/S1.

2.115 ALL BEAM AND COLUMN HOOP REINFORCEMENT SHALL BE CLOSED HOOPS. ALL HOOPS, HOOKS, AND BENDS ARE AS PER DETAIL D/S1.

2.116 ALL BEAM AND COLUMN HOOP REINFORCEMENT SHALL BE CLOSED HOOPS. ALL HOOPS, HOOKS, AND BENDS ARE AS PER DETAIL D/S1.

2.117 ALL BEAM AND COLUMN HOOP REINFORCEMENT SHALL BE CLOSED HOOPS. ALL HOOPS, HOOKS, AND BENDS ARE AS PER DETAIL D/S1.

2.118 ALL BEAM AND COLUMN HOOP REINFORCEMENT SHALL BE CLOSED HOOPS. ALL HOOPS, HOOKS, AND BENDS ARE AS PER DETAIL D/S1.

2.119 ALL BEAM AND COLUMN HOOP REINFORCEMENT SHALL BE CLOSED HOOPS. ALL HOOPS, HOOKS, AND BENDS ARE AS PER DETAIL D/S1.

2.120 ALL BEAM AND COLUMN HOOP REINFORCEMENT SHALL BE CLOSED HOOPS. ALL HOOPS, HOOKS, AND BENDS ARE AS PER DETAIL D/S1.

2.121 ALL BEAM AND COLUMN HOOP REINFORCEMENT SHALL BE CLOSED HOOPS. ALL HOOPS, HOOKS, AND BENDS ARE AS PER DETAIL D/S1.

2.122 ALL BEAM AND COLUMN HOOP REINFORCEMENT SHALL BE CLOSED HOOPS. ALL HOOPS, HOOKS, AND BENDS ARE AS PER DETAIL D/S1.

2.123 ALL BEAM AND COLUMN HOOP REINFORCEMENT SHALL BE CLOSED HOOPS. ALL HOOPS, HOOKS, AND BENDS ARE AS PER DETAIL D/S1.

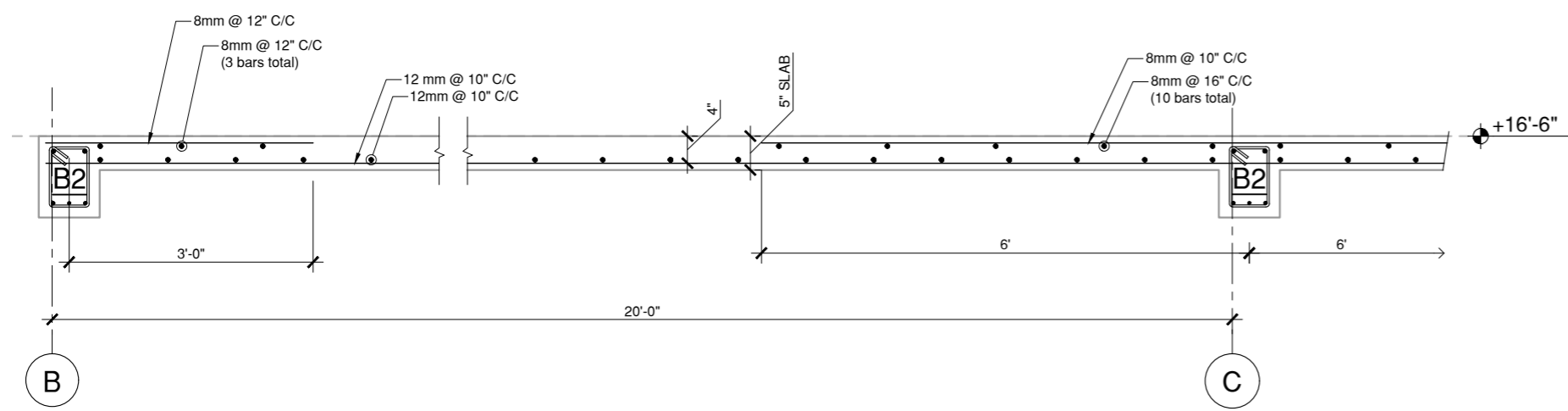
2.124 ALL BEAM AND COLUMN HOOP REINFORCEMENT SHALL BE CLOSED HOOPS. ALL HOOPS, HOOKS, AND BENDS ARE AS PER DETAIL D/S1.

2.125 ALL BEAM AND COLUMN HOOP REINFORCEMENT SHALL BE CLOSED HOOPS. ALL HOOPS, HOOKS, AND BENDS ARE AS PER DETAIL D/S1.

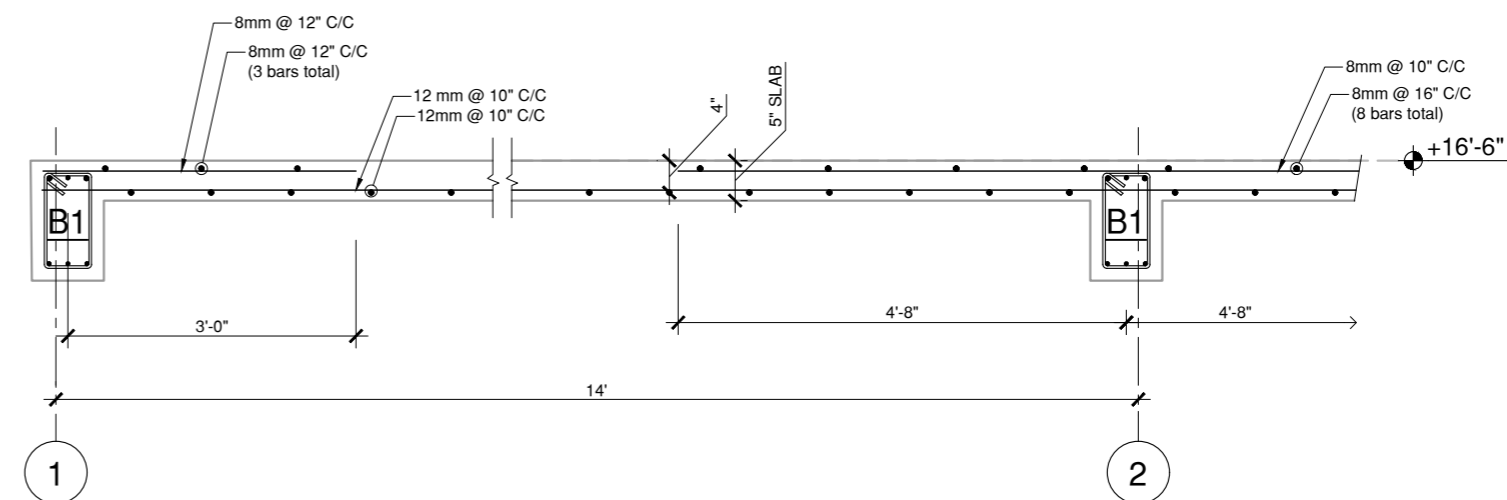
2.126 ALL BEAM AND COLUMN HOOP REINFORCEMENT SHALL BE CLOSED HOOPS. ALL HOOPS, HOOKS, AND BENDS ARE AS PER DETAIL D/S1.

2.127 ALL BEAM AND COLUMN HOOP REINFORCEMENT SHALL BE CLOSED HOOPS. ALL HOOPS, HOOKS, AND BENDS ARE AS PER DETAIL D/S1.

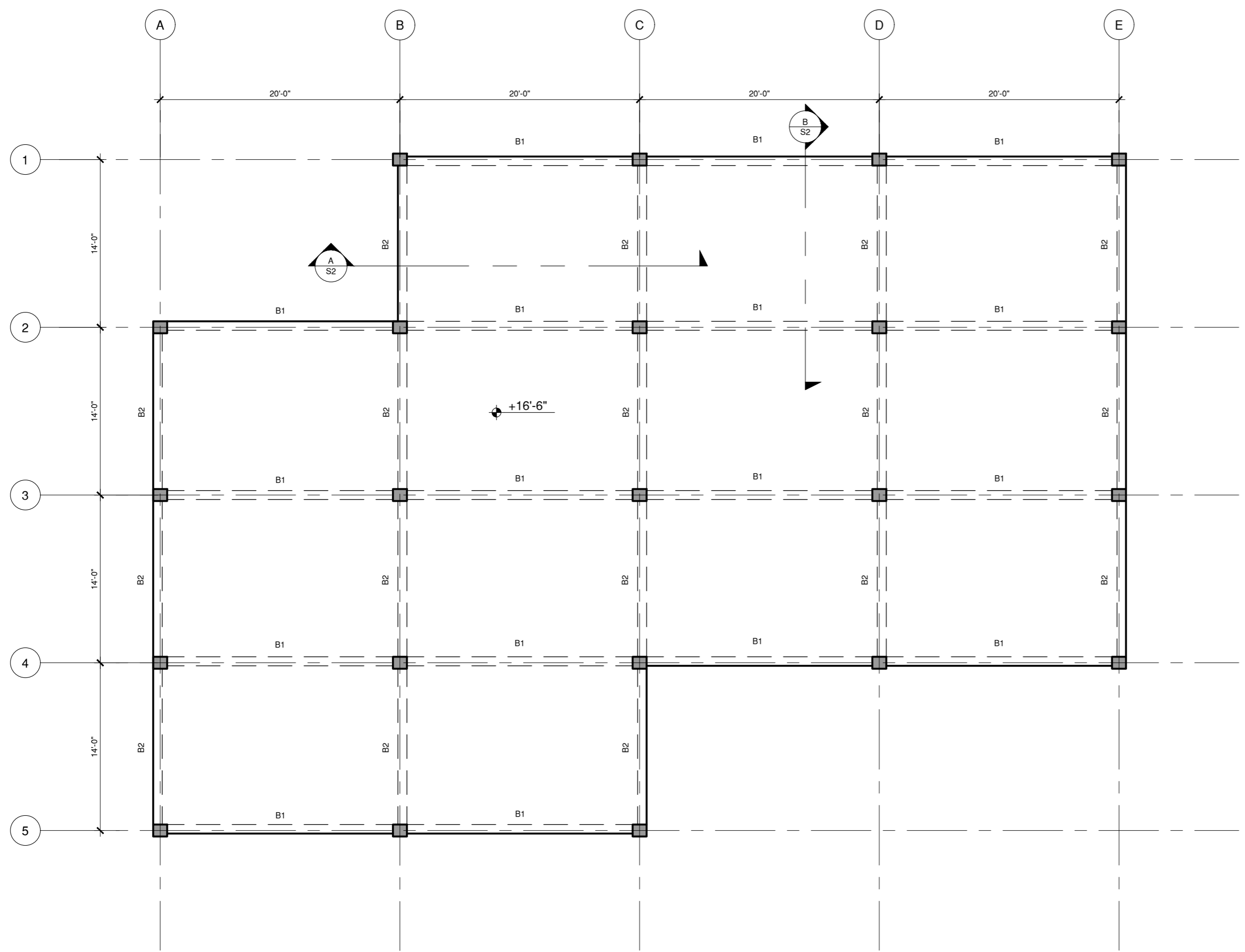
2.128 ALL BEAM AND COLUMN HOOP REINFORCEMENT SHALL BE CLOSED HOOPS. ALL HOOPS, HOOKS, AND BENDS ARE AS PER DETAIL D/S1.



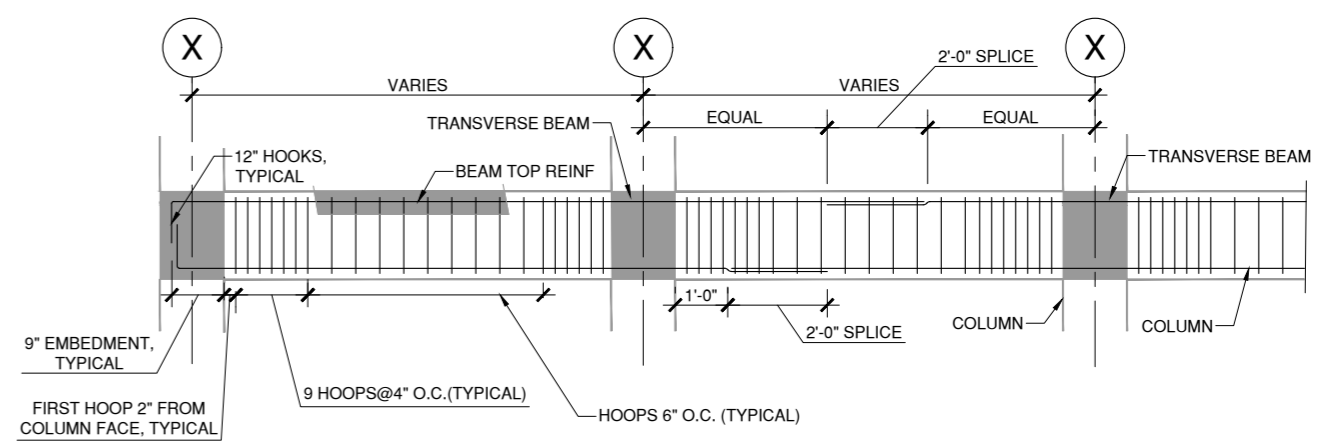
A TYPICAL LONG SPAN ROOF SLAB REINFORCEMENT DETAIL
1/2"=1'-0"



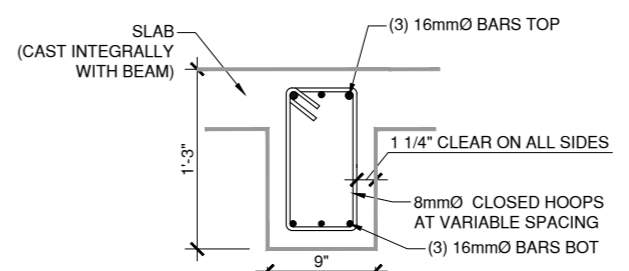
B TYPICAL SHORT SPAN ROOF SLAB REINFORCEMENT DETAIL
1/2"=1'-0"



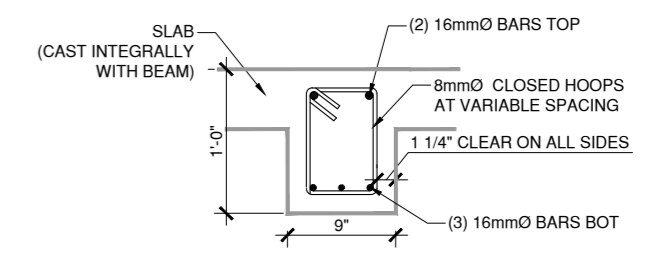
1 ROOF FRAMING PLAN
1/8"=1'-0"



C TYPICAL BEAM REINFORCEMENT DETAIL
1/4"=1'-0"



B1 0'-9" x 1'-3"



B2 0'-9" x 1'-0"

D BEAM SECTIONS
3/4"=1'-0"